

**MEED**  
NETWORKS 

● Consulting ● Solutions ● Training

# ABOUT US

MEED Networks is a multifaceted Nigerian Consultancy and ICT/ Telecom Solution company with strong focus on advisory, project execution, infrastructure design, deployment, integration, maintenance and training. The company's proven track record and extensive know-how spans across large public and private enterprises, oil and gas companies, manufacturing companies, government, educational institutions, broadcasting companies, mobile and fixed telecom operators.

---

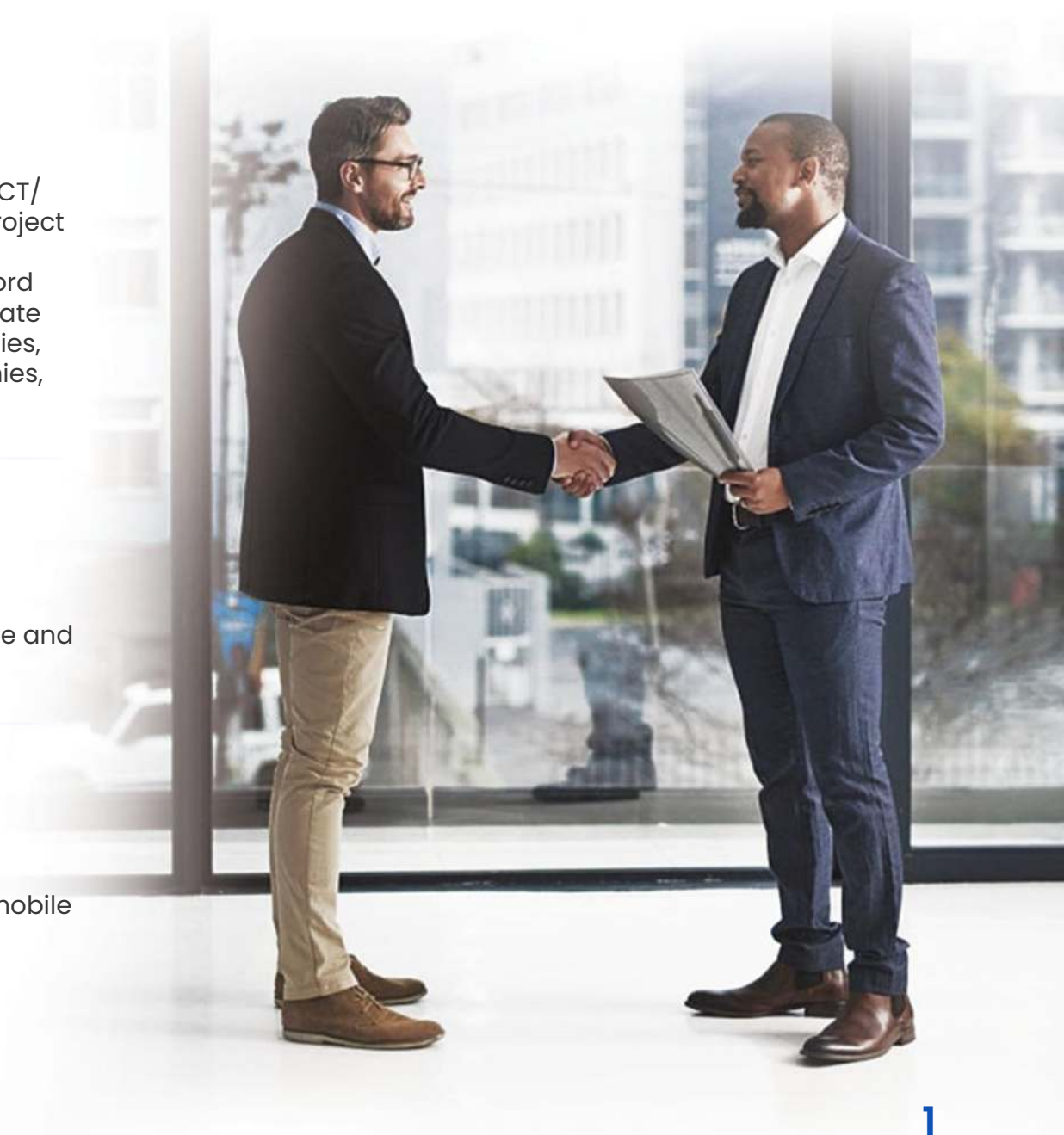
# OUR VISION

To become a global leader in the delivery of world class end-to-end advisory, technology solution companies, mobile and fixed telecom operators.

---

# OUR VALUES

To become a global leader in the delivery of world class end-to-end advisory, technology and solution.companies, mobile and fixed telecom operators.





# THE MEED ADVANTAGE

MEED Networks has an unwavering focus on changing the pitiful mode of service delivery faced within the ICT/ Telecoms industry. We achieve this by understanding our client's needs and providing tailored solutions that meet their requirement and budget. The company delivers every project based on its 3 core principles: providing quality, speed and world class solution. At MEED Networks, our team is able to manage projects from consulting through advisory stages, design to procurement, up until the implementation and commissioning of the project.

## Strategic Partnerships



# INFRASTRUCTURE SOLUTIONS

---

## DATA CENTERS

Meed Networks helps clients design, right-size and integrate data center solutions that energize cloud services, secure mobility, multifaceted collaboration and all types of virtualization.

## FIBRE OPTIC NETWORK DEVELOPMENT

End to End Fiber Optic Network (FTTH) for connecting between Head office and branches, Campus networks, BTS Solutions Large format video walls, Scrolling ticker displays and Corporate signage.

## INFORMATION SYSTEMS

Large format video walls.  
Scrolling ticker displays.  
Corporate signage.

## HYBRID POWER SOLUTIONS

We offer a complete hybrid power solution combining wind energy and solar energy with battery storage and a back up diesel generator. All the new generation of Hybrid Power System are designed to guarantee: Reduction of CO2 emissions, Reduction by 30 to 50% of the Fuel consumption, Reduction of the volume of components to be recycled.

## NETWORK CABLING SOLUTIONS

10 Gigabit copper cabling.  
10 Gigabit optimised fibre optic cabling Interconnect solutions.  
Network monitoring, mapping and security products.  
Data centre solutions and design services.

## RAISED FLOORS

Data centres.  
General offices and public spaces.  
Auditoriums and lobbies.  
Limited access hollow floors.

## NETWORKING & IP TELEPHONY

Core, WAN, Wireless and security CISCO Office IP telephony systems.  
BT Netrix dealing telephony.  
Advanced voice, data and CCTV recording systems.

## POWER DISTRIBUTION

Busbar technology.  
Low voltage components.  
UPS systems.  
Stabilizers and regulators.

## SECURITY SYSTEMS

Access control.  
CCTV systems.

# DATA CENTERS

## WE PROVIDE A FULL DATA CENTER DESIGN SERVICE, TIA-RATED

We provide a comprehensive line of end to end copper and fibre cabling solutions designed to deliver the highest performance to your data centres, whether you are upgrading an existing centre or a new building. The key data centre standard recommended is 10gb/s or better cabling based on the time tested best practice of selecting systems that will provide the maximum longevity. This minimizes the disruption and downtime associated with lower performing cabling and provides lower total cost of ownership for the cabling plant. It comes down to the constant advance of network performance requirements. IP and storage applications are evolving more and more rapidly, consuming bandwidth, driving faster speeds and shortening network applications lifecycles. Even Moore's Law is being challenged by most estimates, processing power doubles every 12months, compared to Moore's original 24-month benchmark.

## DESIGN SERVICE

We have focused our cabling expertise into a data centre service capable of guiding you through the process of selecting and designing the infrastructure upon which your entire data centre will rely. Our Data Centre Services team can provide analysis and actionable recommendations on:

HIGH DENSITY PATCHING

FIBRE OPTIC DATA CENTRE CABLING

VersaPOD™ DATA CENTRE CABINET SOLUTIONS

MapIT™ G2 INTELLIGENT NETWORK MONITORING AND MAPPING



# POWER DISTRIBUTION SYSTEMS

---

Our under-door busbar tracks distribute power with unmatched ease and flexibility. Our installations are designed to provide users access to power anywhere on the floor. No matter what your existing or future office configuration may be, Power can be lapped at multiple points along the bursar and can be terminated in outlet boxes or directly into office furniture. Dual circuits bursars are available and deliver both UPS (clean earth) mains (raw) power down a single bursar. All our bursar systems conform to the highest international integrity and connection and requirements. Safety and reliability come as standard.



# RAISED FLOORS



## Comprehensive Choices

Huge range of floor finishes to match work space and uses  
Carpets  
Vinyl  
High pressure Laminate  
Marble, Granite, Ceramic  
Natural Hardwood

Our raised floor systems facilitates the delivery of power, telecom, data and other services precisely where required and permits both user and building owner easy re-configuration of workspace interiors. The ability to route and re-route services, such as power and data delivers enormous flexibility, whether it is new building or refurbished commercial offices, or hospitals, data centres or reception areas we have a product to satisfy any project demand or application.

## Typical Applications

Offices  
Call Centres  
Education & Healthcare  
Public Building  
Equipment and Control Rooms  
Data Centres  
Acoustic-Sensitive Areas  
Reception and Lift Areas  
Breakout Areas and Kitchens



# NETWORK OPERATION, MANAGEMENT AND COMMAND CENTRES

Our designs provide a structured environment that effectively coordinates operational activities with all participants and vendors related to the function of the network. Our experience covers designing, building, installing network operation, management centres, security operation, command centres and various other monitoring intensive control facilities.

We can provide a turnkey solution by handling everything you need including space design, console furniture, audio-visual systems, network infrastructure, support systems, monitoring services display and video walls.



- INTELLIGENT NETWORK MONITORING AND MAPPING
- SPECIALIST CONSOLE FURNITURE.
- LARGE FORMAT HIGH RESOLUTION DISPLAYS AND VIDEO WALLS.
- SPACE PLANNING AND DESIGN
- HIGH COMPUTER PERFORMANCE HARDWARE
- 24 HOUR POWER SUPPLY.





# HYBRID POWER SOLUTIONS

---



We offer a complete hybrid power solution combining wind energy and solar energy with battery storage and a back up diesel generator.

## DESIGNED TO GUARANTEE:

Reduction of CO2 emissions, Reduction by 30 to 50% of the Fuel consumption, Reduction of the volume of components to be recycled.



# ELECTRICAL SYSTEM DESIGN

## Electrical Design

Electrical System Design  
CAD & Visualizations

## Electrical Contracting

Piped Services  
Air Conditioning  
Building Management System  
(BMS)

## Electrical Contracting

Electrical Installation  
Design & Management  
Solar power system  
installations

Our team at MEED has the ability to design and integrate your full electrical system including consoles, control centers and switchboards.

We have expertise with knowledge of a wide range of distribution and transmission networks, electrical systems and familiar with all major classification society rules and requirements.

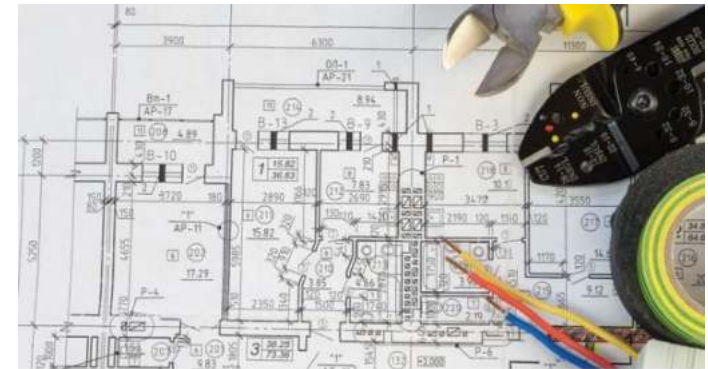
### We have the ability to carry out:

- Power system fault level calculations
- System volt drop calculations
- Cable selection and routing

### We specialise in the following systems:

- Low Voltage Distribution
- Fire Alarms
- General Lighting
- Power (Solar and conventional)
- Lightning Protection

Our systems designs can be converted into manufactured items in our workshop and delivered to the customer. Alternatively, our design capabilities can be utilized on their own and our designs passed to our customers for their implementation are major classification society rules and requirements.



# ELECTRICAL POWER SOLUTIONS

- Design of power supply systems up to 500 kV
- Comprehensive engineering surveys
- Assistance in technical specification drawing
- Obtaining of all necessary technical approvals and government permits
- Protection system designing

- Design of automatic control systems of technological processes
- Design of telemetry and SCADA systems
- Design of automatic systems for commercial measurement of power consumption
- Design of emergency independent power supply for substations
- Design of external and internal power supply
- Design of lightning protection, grounding

- Scientific research in the field of electrical power industry
- Systems of equipotential bounding
- Detailed budget preparation
- Onsite monitoring and supervision
- Technical monitoring and supervision



# ELECTRICAL POWER SOLUTIONS

- Overhead lines;
- Underground cables;
- Wire-ways;

- Rehabilitation and new construction of switchboards and substations;
- New construction of power infrastructure complexes on turnkey basis.
- Dams construction, commissioning, and rehabilitation, for Hydro Power generation



# RENEWABLE ENERGY SOLUTIONS

We believe that making the switch to alternative energy should be easy and affordable. Also, distributed generation is the only way of assisting the government in achieving stable Electricity to all citizens. We have over 10 years of experiences in solar energy installations. we put our best into every installation to make sure that our clients are happy with the result and most importantly, saving cost.

## Product Engineering and Management

MEED Teams covers all the aspects of project engineering and management from consulting | To forming the project team, Overseeing the project | Implementing the plan | Keeping to the project on track both financially and on time | Liaising with the project owners | Designers | Engineers | Contractor's and Supplier's.



## Power Systems Engineering

MEED Teams conduct feasibility studies | Consult on the design | Planning | Commissioning | Rehabilitation of powerplants | Generation | Distribution and Transmission systems | Control rooms | Switchyards | Substations | Transformers | UPS systems | SCADA | Other power apparatus | EPC.



## Maintenance Works

We can carry out planned, ad-hoc or reactive maintenance on all Of our installed systems We can also work to a routine or planned maintenance contracts. to give you peace of mind and ensure business continuity. This include Boiler maintenance and installations

# SMART EDUCATION

---

Students today live in a world of social media, cell phones and streaming video. No matter what they are doing, whether it's chatting with friends or catching up with current events, technology is integrated into their lives. That's why it works so effectively in the classroom -because it can play just as vital a role in how students learn. The best technology products not only engage students today, but also prepare them for tomorrow. Your technology investments should inspire student achievement, be easy to use and help instructors create dynamic lessons. SMART solutions transform higher education teaching and learning spaces into Technology-enabled environments that engage students in extraordinary ways, improve learning outcomes and support innovation, achievement and success. Our solutions also help instructors become more efficient and effective. They can save their lectures and then create catalog of instructions or distribute course

materials directly to students. And with more time and interactive teaching tools, it's easier for instructors to support students as they build the collaboration abilities, critical thinking skills and the knowledge they need for successful careers. These solutions are also scalable and simple to install, integrate and maintain. As your campus grows, you can easily



add interactive technology products to more learning spaces, and you can be sure they will work with your existing investments.



# ERP SOLUTIONS

---

Integrate business processes, allow quick decision making and customer engagement in real-time backed by adequate data—from marketing, sales, service, operations, to finance.

Enterprise resource planning systems are an asset for almost any organization. Our solutions make your business run smoother by unifying and protecting your information; automating processes and reports; managing important information through total systems integration; and providing easy views into trends. With these and many more capabilities, your day-to-day operations and long-term planning becomes easier and faster.

## Microsoft Dynamics

Microsoft Dynamics AX is an integrated, multilingual and multicurrency enterprise resource planning (ERP) software that streamlines financial, customer relationship, and supply chain processes.

---

## Netsuite

NetSuite is the world's leading provider of cloud-based business management software. NetSuite helps companies manage core business processes with a single, fully integrated system covering ERP/financials, CRM, ecommerce, inventory and more.



# BIOMETRIC DATA CAPTURE

Simply defined, biometric authentication is the use of unique characteristics of a person's body or behaviour to verify identity. It can be used to control access to technology, buildings or services. The types of characteristics that can be used for identification can be broadly categorised into physical characteristics including fingerprints, eye scans and face recognition, and behavioural characteristics including voice recognition, keystroke patterns and engagement patterns. Biometric identification systems work on either a recognition or authentication basis. Fingerprint authentication is the most popular method, although facial and voice recognition is becoming more common in certain sectors such as crime prevention and travel.

Biometric technology offers a very high level of detection and security. This is because a fingerprint, iris scan or voice cannot easily be duplicated or falsified. Using a biometric means of authentication is less time consuming, dependable (you can't forget your finger), user-friendly and requires almost no training. Biometrics can be used to automate processes such as recording employee hours, which are prone to falsification and error.

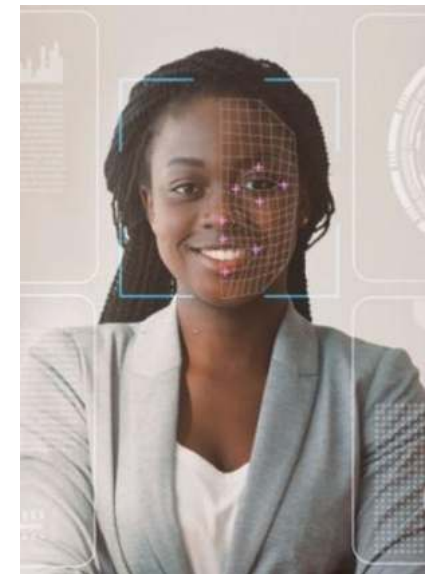
Biometric recognition encompasses both biometric identification—the process of searching against a biometric enrollment database to find and return the biometric reference identifier(s) attributable to a single individual (i.e. 1:n)—and biometric verification—the process of confirming a biometric claim through biometric comparison (i.e. 1:1) (ISO/IEC 2382-37). These processes can be used to perform two distinct tasks in foundational ID systems:



**Deduplication of identity records:** To ensure that each person in a database is unique, ID systems can use biometric identification to perform a duplicate biometric enrollment check. This involves comparing a template generated from a captured biometric against all or a subset of templates stored in biometric database to detect a duplicate registration (a 1:N search), after which the new template is added to the database. This process involves automation as well as manual checks to adjudicate matches

**Authentication of individuals:** Some authentication protocols require biometric verification of the user. This involves a one-to-one (1:1) comparison of a template generated from a captured biometric against a single stored template (e.g., one stored on an ID card or mobile phone, or in a database).

Biometric recognition has rapidly proliferated in modern ID systems in part because it is currently the most accurate and efficient technology available for deduplicating large populations to ensure statistical uniqueness—particularly in countries without existing authoritative sources of identity information—and because it can provide a relatively high level of assurance during authentication. As such, biometrics can be a key ingredient in ensuring the trustworthiness of ID systems.





# ELECTRONIC DOCUMENT MANAGEMENT SYSTEM

---

An EDMS, or electronic document management system, is a robust software designed to centralize an organization's relevant documents and engineering drawings, thereby replacing outdated, disparate or manual systems.

## The goal?

To provide a single, consistent source of truth that can streamline collaboration, facilitate compliance, simplify document version control and ultimately lead to major efficiency and ROI.

## What Can An EDMS Do?

Businesses and organizations find that a well-designed and properly implemented EDMS can help their users tackle some of the more redundant, mundane, and error-prone tasks of day-to-day operations. Using the robust features of a document management system, employees work faster and more efficiently, especially when it gives them the ability to:

## Eliminate printouts and manual processes

Gain instant access to relevant information and documents directly on mobile devices  
Navigate and maintains the relationship between documents, design models (like CAD) and physical spaces or assets.

Access accurate and complete documentation – regardless of source and format – in just a few clicks.

Provide document version control and content management to prevent users from working on incorrect or outdated versions.

Ensure users have access to complete, up-to-date documentation related to work orders or other business processes

Maintain the quality, accuracy and completeness of data and metadata in a unified system

And make no mistake – an EDMS is more than a digital filing cabinet. It's a document organizer, distributor and integrator that will simplify processes and allow your team to use your data rather than simply fumble through it.



# SOFTWARE DEVELOPMENT SERVICES

Software development services covers design, engineering, deployment, support, scaling and evolution of various software types. In IT since 2010, We help develop quality software and offers related services – software consulting, cloud migration, app integration, and more. We serve mid and large enterprises and startups across multiple industries, including retail, financial services, manufacturing, healthcare, and others



## **Complete software development outsourcing**

Shouldering complete software development project pipeline or its part to support your business growth.

## **Custom software development**

Development of custom enterprise software solutions to address the unique needs of your business.

## **Software product development**

Development of SaaS, mobile and desktop applications for marketing and distributing to mass enterprise/consumer users.

## **Software Consulting**

A holistic set of consulting services for both new and ongoing software development projects – from ideation and feasibility study to implementation strategy.

## **Software support and evolution**

A broad set of services – help desk & support, cloud migration, legacy reengineering, and more – to keep your business-critical applications healthy and stable.



## **SOFTWARES WE DEVELOP**

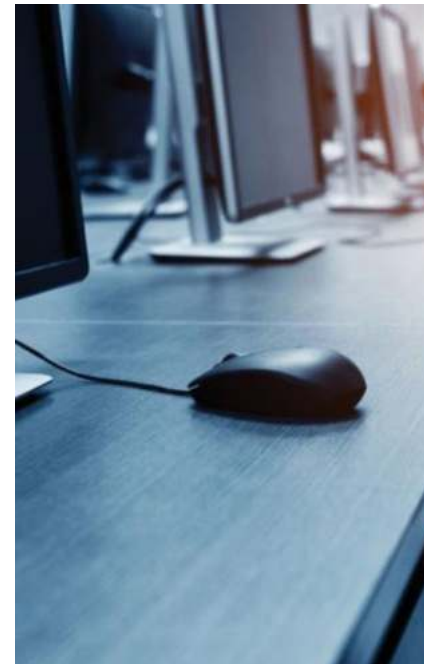
- Web Applications
- Mobile Apps
- Cloud Applications
- Desktop Applications
- Libraries
- SaaS Products

# TRAINING

Training and development has key effects in the productivity of employees and the business as a whole. As part of human capital development, this helps the organisation further achieve long term goals, maximise profit and ensures zero disruption in operations. At MEED Networks, our experienced professionals are able to transfer knowledge to your employees over a wide range of courses within the ICT world and Project Management. We empower your personnel towards becoming efficient and productive with the impacting of advance knowledge in the use of various office tools and software application suite as your organisation may require. we offer in-housing Training, on your site, private and group sessions

## SOME OF OUR COURSES

- Certified Optical Network Associate
- Certified Optical Network Engineer
- Certified Fibre Optics Technician
- Network & Security Management
- Cisco Certification Tracks
- VoIP & Asterisk Courses
- Microsoft Office Suite/Collaboration Tools
- Linux RedHat Course
- Project Management Courses



# CONSULTANCY

---

At MEED, we aim to provide clients with the future in ICT technological solutions, thereby ensuring their investments will meet tomorrow's needs through our range of services. Through our team of innovative and dynamic professionals, we provide tailor specific solutions to clients, building on their existing infrastructure or deploying new infrastructure as the case may require. Our strategic partnership and experience makes advisory easy and well thought for our clients. We have learnt over the years through hands-on and in-class, and we are able to deliver solutions that work without risking clients investments.



# SOME OF OUR HAPPY CLIENTS





## MEED NETWORKS LIMITED

 34, Burundi Street, Off Damba Street, Wuse Zone 5, Abuja, Nigeria.

 09 291 8976, 08034076495, 08098031147, 08055607623

 [info@meednetworks.com](mailto:info@meednetworks.com)

 [www.meednetworks.com](http://www.meednetworks.com)